

Activity 2

CAN YOU IDENTIFY A BIRD?



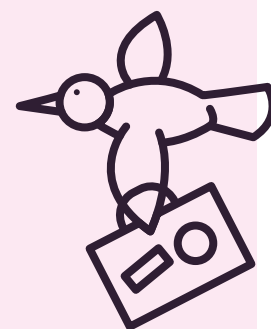
Have you ever stopped to look at all the different birds you see around you?

There are so many different types! Let's work together to see if we can identify some of the birds that live around us.

DID YOU KNOW?

There are over 600 species of bird in the UK.

Some of those birds stay here all year round, but some make incredible journeys across the world to find different places to spend the winter or summer. This is called migration.



YOUR CHALLENGE

1 OBSERVE

Spend 15 minutes at a window looking at all the birds. Take photos or make notes and drawings to help you remember what they look like.



2 IDENTIFY

Use the 'identify a bird' feature on the RSPB website to find out what birds you saw.



3 BUILD

Try making a paper version of a bird you saw. Can you make it fly or glide?



DON'T FORGET TO TAKE PICTURES!



RAVINDA'S TOP TIPS

When building your model bird, you could use origami.

You can find some examples here www.origamiway.com/origami-birds.shtml or you could make and decorate a paper plane which can fly.

